

Contents

Contents

Foreward

1. Introduction
2. Purpose of Scheme
3. Structure of Local Development Framework
4. Evidence Base and Links to Other Strategies
5. Existing Policy Base
6. Proposed Development Plan Documents
7. Proposed Supplementary Planning Documents
8. Other Statutory Documents
9. Documents to be produced after 2007
10. Timetable
11. Management of the Programme
12. Risk Assessment
13. Monitoring and Review

Appendices

Appendix 1 – Document Profiles

Appendix 2– Existing Policies Table

Appendix 3 – Jargon Guide

Appendix 4 – Acronyms

Tables and Figures

Table 1 – Links to other Strategies and Programmes

Table 2 – List of status of Supplementary Planning Guidance

Table 3 – Key dates in the production of an LDF

Figure 1 - Chain of Conformity – How the documents in the LDF fit together

Figure 2 - Three year timetable for production of LDF documents

Foreword

The Government's Planning and Compulsory Purchase Act will result in major changes to the way the planning policy system operates. It will see the replacement of the old system of *Structure Plans*, *Local Plans* and *Supplementary Planning Guidance* with a new system of *Local Development Documents*.

Through the new system, we hope to fully engage with our community, to enable greater participation and involvement in shaping the future of Bromsgrove District. As part of this process, this Local Development Scheme (LDS) has been produced, which represents a public statement of the local planning authority's programme for the next three years.

This *Local Development Scheme* explains:

- The new documents the Council intends to produce
- The subject matter and geographical area for each of the documents
- The timetable for the preparation and the revisions of each document.

If you would like to make any comments about this document please feel free to do so. We would welcome your input and views. Please forward any comments to *Planning Policy* at the address on the back cover of this document.

Cllr Jill Dyer
Portfolio Holder for Planning

1. Introduction

The new Planning and Compulsory Purchase Act, which came into force in September 2004, requires Bromsgrove District Council to prepare a Local Development Framework. This will comprise a 'portfolio' of documents called Local Development Documents (LDDs). Some of these will be Development Plan Documents (DPDs) and subject to independent examination. Others will be classed as Supplementary Planning Documents (SPDs). These will have not full development plan status but will still be subject to full public consultation. Together these documents combined with the Statement of Community Involvement (SCI) and Annual Monitoring Report (AMR) will form the Bromsgrove LDF. The Bromsgrove LDF will be presented in a 'loose-leaf' folder format that can be easily updated.

The LDF will take on board the land use responsibilities of the Worcestershire County Structure Plan and Bromsgrove District Local Plan both of which will be superseded. The LDF in conjunction with the Regional Spatial Strategy will promote and guide the authority's vision and strategy for the district.

The Bromsgrove LDF will:

- *Ensure effective community participation in developing policies;*
- *Set out a clear strategic vision for their area;*
- *Have succinct text and policies;*
- *Cut out unnecessary or repetitive policies; and*
- *Provide greater local focus in policies.*

This document identifies and sets out a three year timetable for production of the Local Development Documents by April 2010.

The Council signed on the 11th February 2005 an initial service level agreement with the Planning Inspectorate. The Local Development Scheme was then amended in October 2005 to include an Area Action Plan for Longbridge and to include new dates for consultation on the Preferred Options version of the Core Strategy and draft stages

of the first two Supplementary Planning Documents. This version of the LDS is the third revision and now includes amended timetables for the production of development plan documents and also contains the addition of An Area Action Plan for Bromsgrove Town Centre.

Appendix 3 contains a Jargon Guide to help readers through this document and understand the key components of the new process.

2. Purpose of Scheme

The main purpose of this LDS is to inform the public of the documents that will make up the new local development framework and the timescales they can expect these documents to be prepared to. The programme set out in this LDS is a challenging one, which will necessitate complete commitment to it and appropriate resources throughout, not just from the District Council, but all the other organisations and bodies involved in it. The Bromsgrove Local Development Scheme has 5 key purposes, which are to:

- i.** Provide a brief description of local development documents to be prepared, their content and geographic area to which they will relate.
- ii.** Establish which local development documents will be development plan documents.
- iii.** In the transitional period, state which policies and proposals of the existing local plan will be replaced by policies in the new local development documents, which will be saved and those to be deleted.
- iv.** Provide an explanation of the relationship between local development documents, especially the core strategy and other local development documents.
- v.** Set out the planned timetable for preparing each local development document including the key milestones to be achieved.

3. Structure of Local Development Framework

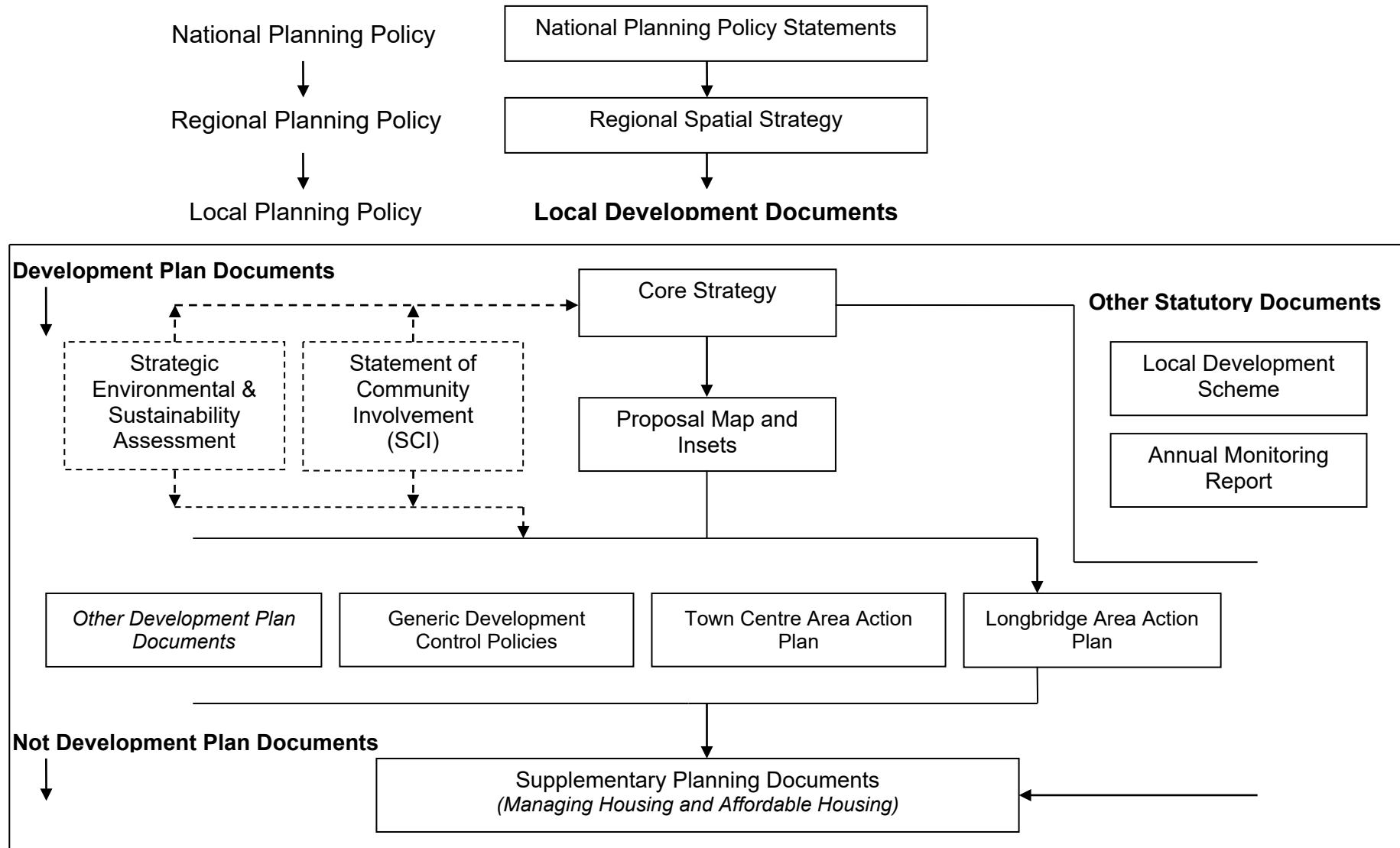
This Local Development Scheme is the first step in the production of a Local Development Framework for taking Bromsgrove forward. Many documents will be produced over the following years that will eventually replace the recently adopted Local Plan. The Local Authority's proposed timetable for doing this is contained in Section 8 of this Scheme.

The new 'parts' of the LDF will be called Local Development Documents (LDDs). Some Local Development Documents will be Development Plan Documents (DPDs) which will have a statutory status and be subject to independent public examination. Area Action Plans (AAPs) are also Development Plan Documents. The Local Authority are also required to produce other statutory documents, including a Statement of Community Involvement and an Annual Monitoring Report.

Other Local Development Documents that do not have development plan status can also be produced such as Supplementary Planning Documents (SPDs). These will not be the subject of a public inquiry but the local authority will still be required to undertake a full public consultation exercise to inform their content. These SPDs will not contain land use designations or site allocations but be documents that provide detailed supplementary guidance to an adopted development plan policy.

A principal feature of the new system is the need to secure the early involvement of stakeholders, developers and landowners in the LDF production process. The Local Authority will use its Statement of Community Involvement (SCI) to explain to stakeholders and the community, how and when they will be involved in the preparation of the LDF. The SCI was adopted in September 2006 and sets out how the local community and other stakeholders will be involved in the preparation of subsequent local development documents. The Chain of Conformity diagram over the page shows how all the documents will fit together.

Figure 1 - Chain of Conformity – How the documents in the LDF fit together



4. Evidence Base and Links to other Strategies

It is vital that the policies and proposals set out in the Local Development Documents are based on a thorough understanding of the needs of Bromsgrove District. The Local Authority already maintains an up-to-date land use monitoring information base. Further evidence will need to be collected, including environmental information to inform the proper environmental assessment of Local Development Documents when undertaking a combined Strategic Environment Assessment (SEA) and Sustainability Appraisal (SA) at the preferred options stage of plan production. The following monitoring reports comprise the evidence base on which the amended Local Development Scheme priorities were formulated;

Housing Land Availability Study (April 2006)

Employment Land Availability Study (April 2006)

Housing Capacity Study (September 2004)

Bromsgrove Town Centre Study (April 2004)

Draft South Housing Market Needs Assessment (February 2007)

It is also essential that the LDF reflects the land use and development objectives of other strategies and programmes. Spatial expression will therefore need to be given to those elements of other strategies and programmes, particularly the Community Strategy, which relate to the use and development of land.

The table over the page contains details of strategies and programmes that have been produced, both internally and externally. The contents of these documents where appropriate will inform the preparation and contents of future Local Development Documents. This is not an exhaustive list as over time other strategies and programmes will be produced or existing ones reviewed and changed that could influence the production of the Bromsgrove LDF.

Table 1 – Links to other Strategies and Programmes

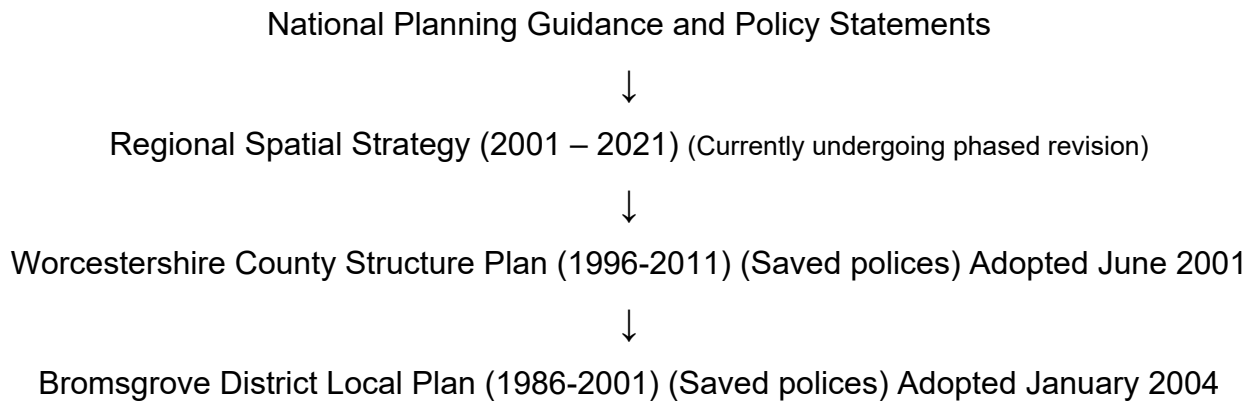
Title	Date	Responsible Body (BDC = Bromsgrove District Council) (WCC = Worcestershire County Council)
Community Strategy 2003 – 2013 (currently being reviewed planning officers actively involved)	2004	BDC & partners
Draft Local Air Quality Management Action Plan	2004	BDC & Casella Stanger Environmental Consultancy
Best Value Performance Plan	2004	BDC
A Community Strategy for Worcestershire 2003-2013	2003	WCC
Sports Pitch Strategy	2002	BDC, WCC & PMP Consultancy
Housing Needs Survey	2004	Fordham Research & BDC
Countryside & Access Recreation Strategy	2004	WCC in partnership & BDC
Bromsgrove District Biodiversity Action Plan	2000	Worcestershire Wildlife Trust
Biodiversity Action Plan for Worcestershire	1999	Worcestershire Biodiversity Partnership
Local Transport Plan 2006-2011	2006	WCC
Community Safety Strategy 2002-2005	2002	BDC, WCC, West Mercia plus partners
Local Agenda 21 Strategy	2001	BDC
Contaminated Land Strategy	2001	BDC
Tourism Strategy 2002-2005	2002	WCC in partnership with other LAs including BDC
Local Delivery Plan 2003-2006	2003	Redditch & Bromsgrove Primary Care Trust
Bromsgrove Town Centre Study Retail Study	2004	CBRE/Urban Practitioners
Cultural Strategy 2002-2007	2002	WCC in partnership with other LAs including BDC

Planning and environment Services Business Plan 2007 - 2008	2007	BDC
West Midlands Economic Strategy Action Plan Update	2004	Advantage West Midlands
Arts Strategy 2003-2008	2004	Artservice



5. Existing Policy Base

The existing planning chain of conformity for the District is as follows:



Local Plan Policies

All policies contained in the Bromsgrove District Local Plan and Worcestershire Structure Plan were saved for a period of three years from commencement of the Planning and Compulsory Purchase Act (saved to 28th September 2007).

A considerable number of policies have also needed to be saved post 2007 as the Local Authority has not had the time or the resources to prepare a complete suite of new policies. This will only be the case where an existing policy conforms with National or Regional Guidance. A complete list of all existing Local Plan policies and details on how they will be incorporated into the new system is contained in Appendix 2.

Supplementary Planning Guidance

The Local Authority has over the years prepared a number of Supplementary Planning Guidance notes (SPG). As it is not possible to transfer SPG automatically to SPD then the Council are proposing to save a number of SPGs where they are linked to adopted saved Development Plan policies and have been through a process of preparation similar to that required for SPD. The table over the page lists all current SPGs. These SPGs will be a 'material consideration' under the new planning system.

Table 2 – List of status of Supplementary Planning Guidance

Title	Drafted	Adopted	Existing Policy Link	Status	Comments
SPG1 Residential Design Guide	1995	Jan 04	S7, S8, S9, S10, S11,S12	Saved	
SPG2 Shop Fronts and Advertisements	1995	Jan 04	S24, S25 and S26	Saved	
SPG3 Car Parking Standards	1994	Jan 04	N/A	Deleted	New Standards in Local Plan
SPG4 Conversion of Rural Buildings	1994	Jan 04	C27	Saved	
SPG5 Agricultural Building Design Guide	1994	Jan 04	C22 & C30A	Saved	
SPG6 Agricultural Buildings and Occupancy Conditions	1995	Jan 04	C21 & C24	Saved	
SPG7 Extensions to Dwellings in the Green Belt	2001	Jan 04	S11	Saved	
SPG8 Alvechurch Village Design Statement	2001	Jan 04	Para 13 of PPS 7 & Annex C of PPS 1	Saved	
SPG9 Lickey and Blackwell Village Design Statement	2002	Jan 04	See Para 13 of PPS 7 & Annex C of PPS 1	Saved	
SPG10 Managing Housing Supply	2003	Jul 03	D2 & D4 of Structure Plan	Replaced	Replaced by SPD
SPG11 Outdoor Play Space	2004	Jul 04	RAT 5 & Rat 6	Saved	
Planning Obligations for Education Facilities (County Council SPG)	2002	Apr 03	Policy IMP1 of Structure Plan	Saved	

Explanation of Status

Saved = Linked to a saved policy.

Replaced = To be replaced by new guidance before 2007

Deleted = Deleted on commencement of the Act

6. Proposed Development Plan Documents

This Section provides an overview of development plan documents the Council are proposing to begin work on before September 2007.

- **Core Strategy**

This document will set out the long-term spatial vision and the strategic policies and proposals to deliver that vision. It will cover the same period as the revised Regional Spatial Strategy that is to 2026. It will not merely repeat national and regional guidance but instead provide a spatial strategy specific to the needs of Bromsgrove. It will contain a set of primary policies for delivering the core strategy and set the broad locations for development through the production of a key diagram. It will not deal with site specific allocations or issues. Once adopted, all other development plan documents will have to be in conformity with it.

- **Proposals Map**

The proposals map will illustrate on an Ordnance Survey base map all the policies and proposals contained in development plan documents and saved policies. It will be revised as new development plan documents are prepared and adopted. It will show areas of protection, including Green Belt boundaries and Conservation Areas, and site specific policies and proposals.

Separate inset maps will also be produced showing proposals for parts of the authority's area. It is intended that the maps will be produced in a A3 loose leaf format for ease of use and to allow easy updating. An overview map of the whole District would also be produced. Any allocations or designations from the County Council's Minerals and Waste Plan will also be shown on the Proposals Map.

- **Generic Development Control Policies**

The document will contain a generic set of District wide policies against which planning applications for the development and use of land and buildings will be considered.

This document will;

- i. Contain policies that accord with the vision and objectives set out in the Core Strategy.
- ii. Focus on topic related policies such as protecting residential amenity and protection of the landscape instead of use-related policies.
- iii. Policies will not repeat national planning policy statements but will set in context how such policy applies to the local area.
- iv. Policies will be positive and will focus on achieving the outcomes required to meet the authority's vision as set out in the Core Strategy.

- **Longbridge Area Action Plan**

This document will provide a comprehensive land use strategy for the Longbridge area. With the closure in early 2005 of the Rover MG car manufacturing plant in Longbridge a significant amount of land has become vacant in the Bromsgrove District. This Area Action Plan will guide not just redevelopment of this land but also the wider Longbridge area and will be produced in conjunction with Birmingham City Council.

7. Proposed Supplementary Planning Documents

This Section provides an overview of supplementary planning documents the Council are proposing to adopt. While these SPDs will not have the status of development plan documents, they will be subject to a statutory adoption process and require a sustainability appraisal. They will provide supplementary policies and guidance on adopted development plan policies.

- **Managing Housing**

While the Core Strategy will include policies that reflect requirements for new housing this document will contain specific guidance and definitions relating to the delivery and management of housing supply. When future housing targets post 2011 are known the Council will seek to publish an Allocations DPD showing the areas and sites of future housing growth.

- **Affordable Housing**

This SPD will provide detailed guidance on the provision and promotion of new affordable housing development in the District.

8. Other Statutory Documents

This section contains information on other statutory documents that the Council are required to produce as part of the LDF.

- **Statement of Community Involvement (SCI)**

This is a key component of the Local Development Framework. It states how the local authority will involve the community in the preparation of local development documents and in development control decisions. This procedural document has been prepared early on in the process and enables the community to know when and how it can get involved.

- **Annual Monitoring Report (AMR)**

This report will be produced annually with the first report to be produced in December 2005. The two key aims of this report will be to assess;

- i) the implementation of the local development scheme; and
- ii) the extent to which the aims of saved policies and those contained in local development documents are being achieved.

- **Strategic Environmental Assessment (SEA) and Environmental Assessment (SA) Report**

Local Planning authorities must comply with European Directive 2001/42/EC which requires formal strategic environmental assessment of certain plans and programmes which are likely to have significant effects on the environment. The SEA and SA will play an important part in ensuring that local development documents produced by the Council reflect sustainability objectives.

An integrated SEA and SA will be produced alongside the production of local development documents. An environmental report detailing the assessment of policies and options will be published and be used to justify policy decisions. The results of the SEA and SA study will help guide the local authority towards a sustainable policy framework.

9. Documents to be produced after 2010

This section provides general information on documents the Council will begin work on after April 2010.

- **Development Plan Documents**

Longer term the following topic areas have been identified by the Council as possible future development plan documents. It is anticipated that work on one or more of these documents would be started post April 2010.

- Housing Allocations
- Economic and Employment Growth
- Historic Conservation
- Green Belt boundaries
- Village Envelope boundaries
- Open Space

- **Supplementary Planning Documents**

The Council are intending to produce a number of SPDs after April 2010. The Council through the production of new SPDs will;

- Replace and update guidance contained in existing SPGs
- Produce development briefs for large sites from the allocations DPD

10. Timetable

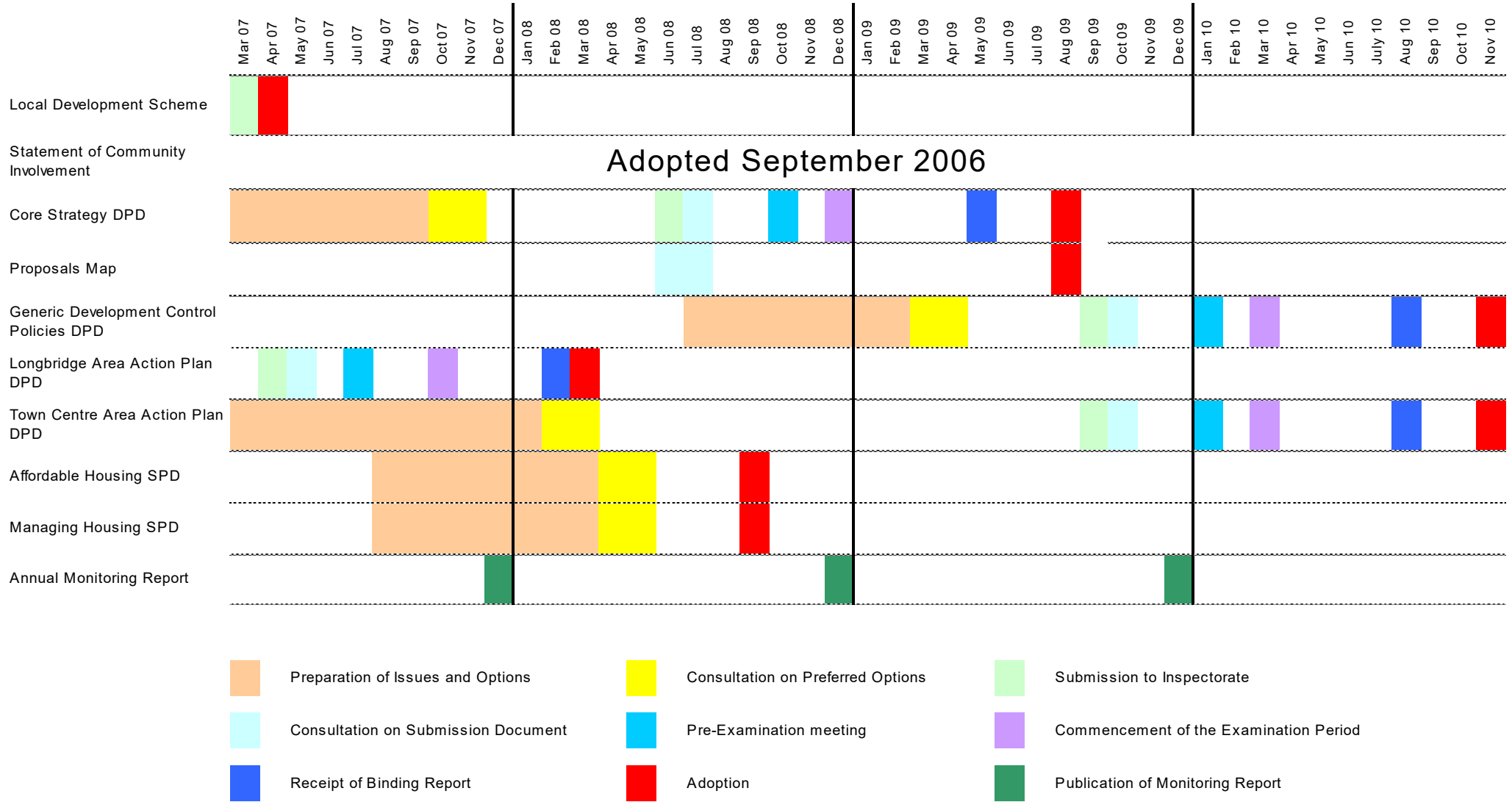
The table over the page and the chart on page 18 indicate a timetable for the production of the Local Development Framework documents by April 2010. Further details on each document to be produced are contained in Appendix 1.

The table and chart indicate the key dates in the process. Following the publication of the Preferred Options and Submission Documents there will be a statutory 6 week consultation process. The Examination date is subject to consultation with the Planning Inspectorate. The timetable will be reviewed annually.

Table 2 – Key milestones in the production of local development documents

Document	Begin preparation of issues & options	Consultation on Preferred Options	Date of Submission to Inspectorate	Consultation on Submission document (or Draft SPD)	Estimated date for pre-examination meeting	Estimated date for Commencement of Examination	Estimated date for receipt of Binding Report	Adoption Date
Local Development Scheme	October 04	N/A	January 05	N/A	N/A	N/A	N/A	April 07
Statement of Community Involvement	October 04	February 05 / March 05	14 th July 05	July / August 05	Oct 05	Dec 05	January 06	Adopted 7 th Sept 07
Core Strategy	January 05	Oct / Nov 07	June 08	July 08	Oct 08	Dec 08	May 09	August 09
Proposals Map	N/A	N/A	N/A	June / July 08	N/A	N/A	N/A	August 09
Longbridge AAP	October 05	Feb / March 07	April 07	May 07	July 07	Oct 07	Feb 08	March 08
Generic Development Control Policies	June 08	March / April 09	Sep 09	Oct 09	Jan 2010	March 2010	August 2010	N/A
Affordable housing SPD	August 07	April / May 08	N/A	N/A	N/A	N/A	N/A	September 08
Managing Housing SPD	August 07	April / May 08	N/A	N/A	N/A	N/A	N/A	September 08

Figure 2 – Key Milestones in the production of Local Development Documents



11. Management of the Programme

While some components of the programme may be outsourced due to the need for external specialist input or/and internal resources issues the overall management of the process and delivery of the Framework will be in-house.

Local Development Framework Working Group

The Local Development Framework requires rapid progress in order to ensure that the LDS timetable is achieved. As part of this process officers will need to have a regular dialogue with members on both strategic and local policy issues. As such a 'working party' of members has been appointed.

The Working Group is representative of both the political composition of the Council and in geographic coverage. It will be used for informal discussion sessions and, when necessary, more formal endorsement of proposals prior to undertaking further stages of the policy process. The objectives of the Working Group are to increase early Member involvement in the process so resulting in fewer hold-ups later on in the process and to ensure that adequate consideration is given to relevant matters of planning policy.

Internal Resource Implications

The Strategic Planning section will have responsibility for the production of all the Local Development Documents. It is anticipated that the specialist planning consultants will be used to verify work on the Statement Strategic Environmental Assessment. The Strategic Planning Team will also work closely with the Development Control Section on the production of the Development Control Policies DPD.

External Resource Implications

It is difficult to predict the impact of external bodies on the production of the Bromsgrove LDF. The timetable contains assumptions regarding possible Inquiry and adoption dates. The Planning Inspectorate have been consulted regarding the realism of these dates. These will be modified as the Inspectorate gains a more complete national perspective of likely workloads. The early preparation of the

Statement of Community Involvement has helped establish how community and stakeholder involvement will be integrated into the process to ensure that key players can positively engage in the plan work at the most appropriate points.

12. Risk Assessment

There will always be a level of uncertainty associated with a document such as the Local Development Scheme. It is legitimate to consider how reasonable and achievable are the targets set out above and what issues may affect the overall deliverability of the LDS.

In order to address this issue the Council have carried out a risk assessment which identifies potential risks and suggests mitigating action.

Risk identified	Issue	Degree of Risk	Mitigation
Staff resources	Over recent years the Planning Policy section has experienced an increased turnover of staff and difficulty in recruiting experienced staff. Whilst this situation has improved, the section is still currently understaffed. Consequently targets identified in previous versions of the Local Development Scheme have slipped.	Medium	There are National difficulties in recruiting experienced planning staff. The filling of vacant posts continues. It may be necessary in certain circumstances to explore other avenues to deliver documents for example, by employing consultants. Targets to be revised to represent more realistic timescales.
Competing work priorities	The Planning Policy section is involved in a wide range of work for example support and advice to Development Control and involvement with work priorities of other departments.	Medium	The high priority for LDF work is increasingly being acknowledged. At certain times other work may have to take a lower priority. By setting realistic targets it is anticipated that some flexibility can be built into the work programme.
Financial resources	The ability to deliver the LDS is dependent on sufficient funding for evidence gathering, plan	Medium/low	Identified demands on financial reserves can currently be met through Council

	production, consultation, funding for the examination including the Planning Inspector, Programme Officer and printing costs. Unexpected requirements for evidence may result from emerging government guidance.		budgets such as a PPG17 open space survey, an SFRA and costs for the examination have been set aside.
Other guidance	Regional Guidance is currently being reviewed and timescales do not fit comfortably, for example, the environment section of the RSS is programmed for launch in the Spring. Unexpected requirements impacting on the evidence base may result from emerging government guidance.	Medium/high	These will have to be taken into account at the next appropriate stage in preparation or review.
Joint working	The LDF is being prepared within the context of the Community Strategy. Any slippage in its production may have implications on the targets set out in the LDS.	Medium	Close liaison between relevant Officers and Stakeholders via LSP. Application of project management principles. Opportunities for joint working to inform the evidence base will be encouraged for example, Joint SA working with Worcestershire Authorities, joint working with LPA's based on Housing Market Assessment Areas.
Capacity of outside agencies	Due to the relatively recent release of PPS25 requiring SFRA's and the likelihood that most LA's will commission consultants to carry out this technical appraisal, this may put pressure on a relatively small no. of qualified consultants able to carry out this type of work, with consequent	High	An early approach will be made to appropriate organisations to ascertain likely availability etc. Where possible either joint or tiered SFRA's will be pursued. The capacity of the Planning Inspectorate to deal with work pressures arising from a

	<p>impact on timescales The capacity of the Planning Inspectorate to deal with submissions by a number of LPA's may impact on timetable and deliverability of LDF's</p>		<p>number of LPA's may impact on the timetable and deliverability of the LDS. The Strategic Service Level agreement will assist in minimising risk by securing time for inquiries against an agreed timetable in the LDS</p>
Scale and nature of consultation responses	<p>If representations are not handled efficiently this could negatively impact on tests of soundness.</p>	Low	<p>Ensure consultation is in accordance with SCI. Investigate use of appropriate tailored and compatible software to manage community engagement process.</p>
Political Priorities	<p>Changes in Political administration brings the potential for changes in priorities and direction</p>	Low/medium	<p>Regular contact with Members particularly via the LDF working Group will minimise the risk involved in this process.</p>
Soundness	<p>The Planning Inspector may conclude that the DPD is unsound</p>	Medium	<p>The District Council will seek to ensure all DPD's are sound and founded on a robust evidence base and well audited stakeholder and community engagement systems in order to minimise the risk of legal challenge. The District Council will work closely with GOWM at relevant stages to minimise such risks and will closely examine emerging guidance.</p>

12. Monitoring and Review

Review and monitoring are key aspects of the Government's 'Plan, monitor and manage' approach to the planning system. The Council will publish an Annual Monitoring Report (AMR). This report will assess:

- i. the implementation of the local development scheme
- ii. the extent to which policies in local development documents are being achieved.

The AMR will review actual plan progress against the targets and milestones for local development document preparation set out in this scheme. If the Council is falling behind the schedule or has failed to meet a target the AMR will explain why this has happened and the action to be taken. If required then this scheme will be updated and re-published at the same time as the publication of the AMR.

Appendix 1 – Document Profiles

Core Strategy DPD		
Document Details	<ul style="list-style-type: none"> • Role and Content • Status • Position in chain of conformity • Geographic coverage 	<p>Will set out the vision, spatial strategy and core policies for the spatial development of the District.</p> <p>Development Plan Document.</p> <p>Conforms with Regional Spatial Strategy.</p> <p>District Wide</p>
Timetable	<ul style="list-style-type: none"> • Preparation of Issues and Options • Consultation on Preferred Options • Submission to Inspectorate • Consultation on Submission Document 	<p>January 2005 September 2007</p> <p>October / November 2007</p> <p>June 2008</p> <p>July 2008</p>

	<ul style="list-style-type: none"> • Pre-examination meeting • Commencement of Examination Period • Receipt of Binding Report • Adoption date 	<p>October 2008</p> <p>December 2008</p> <p>May 2009</p> <p>August 2009</p>
Production	<ul style="list-style-type: none"> • Process led by • Management arrangements • Resources required to produce DPD • Approach to involving stakeholders 	<p>Strategic Planning Section</p> <p>See Section 11</p> <p>Internal resources including studies produced for evidence base.</p> <p>Outlined in Statement of Community Involvement</p>

Proposals Map DPD

Document Details	<ul style="list-style-type: none"> • Role and Content • Status • Position in chain of conformity • Geographic coverage 	<p>Maps illustrating policies, proposals and designations contained in the Development Plan documents.</p> <p>Development Plan Document.</p> <p>Conforms with Core Strategy.</p> <p>District Wide</p>
Timetable	<ul style="list-style-type: none"> • Preparation of Issues and Options • Consultation on Preferred Options • Consultation on Submission Document • Commencement of Examination Period • Receipt of Binding Report 	<p>N/A</p> <p>N/A</p> <p>June / July 2008</p> <p>N/A</p> <p>N/A</p>

	<ul style="list-style-type: none"> • Adoption date 	August 2009
Production	<ul style="list-style-type: none"> • Process led by • Management arrangements • Resources required to produce DPD • Approach to involving stakeholders 	<p>Strategic Planning Section</p> <p>See Section 11</p> <p>Internal preparation and external printers.</p> <p>Outlined in Statement of Community Involvement.</p>

Longbridge Area Action Plan DPD

<p>Document Details</p>	<ul style="list-style-type: none"> • Role and Content • Status • Position in chain of conformity • Geographic coverage 	<p>This document will provide a comprehensive land use strategy for the Longbridge area</p> <p>Development Plan Document.</p> <p>Conforms with Core Strategy.</p> <p>Former Rover site at Longbridge.</p>
<p>Timetable</p>	<ul style="list-style-type: none"> • Preparation of Issues and Options • Consultation on Preferred Options • Submission to Inspectorate • Consultation on Submission Document • Pre-examination meeting • Commencement of Examination Period • Receipt of Binding Report • Adoption date 	<p>October 2005 to July 2006</p> <p>February / March 2007</p> <p>April 2007</p> <p>May 2007</p> <p>July 2007</p> <p>October 2007</p> <p>February 2008</p> <p>March 2008</p>
<p>Production</p>	<ul style="list-style-type: none"> • Process led by • Management arrangements • Resources required to produce DPD • Approach to involving stakeholders 	<p>Strategic Planning Section</p> <p>See Section 11</p> <p>Internal resources including studies produced for evidence base.</p> <p>Outlined in Statement of Community Involvement</p>

Development Control Policies DPD

Document Details	<ul style="list-style-type: none"> • Role and Content • Status • Position in chain of conformity • Geographic coverage 	<p>Document containing policies that ensure development meets certain criteria and contributes to the vision of the Core Strategy.</p> <p>Development Plan Document.</p> <p>Conforms with Core Strategy</p> <p>District Wide</p>
Timetable	<ul style="list-style-type: none"> • Preparation of Issues and Options • Consultation on Preferred Options • Submission to Inspectorate • Consultation on Submission Document • Pre-examination meeting • Commencement of Examination Period • Receipt of Binding Report • Adoption date 	<p>June 2008 to February 2009</p> <p>March / April 2009</p> <p>September 2009</p> <p>October 2009</p> <p>January 2010</p> <p>March 2010</p> <p>August 2010</p> <p>N/A</p>
Production	<ul style="list-style-type: none"> • Process led by • Management arrangements • Resources required to produce DPD • Approach to involving stakeholders 	<p>Strategic Planning Section</p> <p>See Section 11</p> <p>Internal resources including studies produced for evidence base.</p> <p>Outlined in Statement of Community Involvement</p>

Statement of Community Involvement

Document Details	<ul style="list-style-type: none"> • Role and Content • Status • Position in chain of conformity • Geographic coverage 	<p>How the Local Authority will involve the community in the preparation, alteration and continuing review of all local development documents and in significant development control decisions</p> <p>Statutory document but not DPD</p> <p>N/A</p> <p>District Wide</p>
Timetable	<ul style="list-style-type: none"> • Preparation of Issues and Options • Consultation on Preferred Options • Submission to Inspectorate • Consultation on Submission Document • Pre-examination meeting • Commencement of Examination Period • Receipt of Binding Report • Adoption date 	<p>October to December 2004</p> <p>February and March 2005</p> <p>July 2005</p> <p>July and August 2005</p> <p>October 2005</p> <p>December 2005</p> <p>January 2006</p> <p>September 2007</p>
Production	<ul style="list-style-type: none"> • Process led by • Management arrangements • Resources required to produce DPD • Approach to involving stakeholders 	<p>Strategic Planning Section</p> <p>See Section 11</p> <p>Internal resources with external verification (if required)</p> <p>N/A</p>

Annual Monitoring Report

Document Details	<ul style="list-style-type: none"> • Role and Content • Status • Position in chain of conformity • Geographic coverage 	<p>The monitoring of the implementation of the LDS and the extent to which policies in local development documents are being achieved.</p> <p>Development Plan Document.</p> <p>Conforms with Core Strategy</p> <p>District Wide</p>
Timetable	Adoption and Publication	Annually each December
Production	<ul style="list-style-type: none"> • Process led by • Management arrangements • Resources required to produce DPD • Approach to involving stakeholders 	<p>Strategic Planning Section</p> <p>See Section 11</p> <p>Internal resources</p> <p>Outlined in Statement of Community Involvement</p>

Appendix 2 – Existing Policies Table

The following tables identify existing policies and their subject area from the Bromsgrove District Local Plan (BDLP) that will be saved until replaced by policies in a Development Plan Document (DPD). The policies have been grouped by Development Plan Document. Please note this is a general guide only and could be subject to change as DPDs are prepared.

Core Strategy (DPD)	
Subject Area	Policy Reference
District Strategy	DS1, DS2, DS3, DS4, DS5, DS8, DS9, DS11, DS13
Housing	S3,S4, S6, S14, S15, S16
Shopping	S20, S21
Community Facilities	S28, S35, S38
Landscape	C1, C6
Woodlands	C18, C19
Transport	TR1, TR3, TR4, TR5, TR5A, TR13, TR15, TR16
Recreation	RAT1, RAT5, RAT6,
Rights of Way	RAT12, RAT16, RAT19, RAT20
Tourism Schemes	RAT22, RAT23, RAT27
Environmental Services	ES9, ES15

Generic Development Control Policies (DPD)

Subject Area	Policy Reference
Housing	S7, S8, S9, S10, S11, S12, S13, S13A, S17, S18, S19
Shopping	S22, S23, S24, S24A, S25, S26, S27, S27A, S27B
Community Facilities	S29, S31, S32, S33
Conservation	S35A, S36, S37, S39, S39A, S41, S42, S43, S44, S45, S46, S47, S48
Landscape	C4, C5, C16
Nature Conservation	C9, C10, C10a, C11, C12, C16
Woodlands	C17
Agriculture	C21, C22, C23, C24, C27, C27A, C27B, C27C, C29, C30, C30A
Farm Diversification	C31, C32, C33, C34,
Archaeology	C36, C37, C38, C39
Employment	E4, E6, E7, E9, E10, E11
Transport	TR2, TR6, TR8, TR9, TR10, TR11, TR12
Recreation	RAT2, RAT3, RAT4, RAT7, RAT8, RAT9
Rights of Way	RAT13, RAT17, RAT21
Tourism	RAT24, RAT25, RAT26, RAT28, RAT29, RAT30, RAT33, RAT34, RAT35
Environmental Services	ES1, ES2, ES3, ES4, ES5, ES6, ES7, ES8, ES11, ES12, ES13, ES14, ES14A, ES16

The following table identifies the area policies from the Bromsgrove District Local Plan that the Council are proposing to save .

Subject Area	Policy Reference
Alvechurch	ALVE2, ALVE3, ALVE4, ALVE5, ALVE6, ALVE7, ALVE8
Barnt Green	BG1, BG2, BG3, BG4
Belbroughton	BEL1
Beoley	BE1, BE2, BE3
Bournheath	BOUR1
Bromgrove	BROM5, BROM5A, BROM5B, BROM5C, BROM5D, BROM5E, BROM5F, BROM6, BROM9, BROM11, BROM12, BROM13, BROM14, BROM16, BROM18, BROM19, BROM22 BROM23, BROM24, BROM28, BROM30, BROM32,
Burcot	BUR1
Clent	CL1
Cofton Hackett	CH1
Fairfield	FAR1
Finstall	FIN1, FIN3, FIN4
Frankley	FR2, FR3, FR4
Hagley	HAG2, HAG3, HAG2A, HAG2B, HAG5
Holy Cross	HOL1
Hopwood	HOP1
Romsley	ROM1, ROM2
Rowney Green	ROW1
Rubery	RUB2, RUB4, RUB5
Tardebigge	TARD1
Wythall	WYT1, WYT2, WYT3, WYT4, WYT5, WYT6, WYT7, WYT8, WYT9, WYT10, WYT11, WYT13, WYT15, WYT16

The following table identifies policies from the Bromsgrove District Local Plan that the Council are not intending to save or replace.

Subject Area	Policy Reference
District Strategy	DS6, DS7, DS10, DS12, DS14, DS15
Housing	S1, S2
Employment	E1, E2, E3
Agriculture	C20, C25, C26, C35
Recreation	RAT11
Bromsgrove	BROM1, BROM4, BROM7, BROM8, BROM8A, BROM10, BROM17, BROM25, BROM26, BROM29, BROM31
Hagley	HAG1

Appendix 3 – Jargon Guide

Local Development Framework (LDF)

The LDF will provide the framework for delivering the planning strategy and policies for Bromsgrove District.

Local Development Documents (LDD)

The LDF is comprised of LDDs. These can be either Development Plan Documents (DPD), Supplementary Planning Documents (SPD) or other statutory documents such as the SCI and AMR.

Development Plan Documents (DPD)

These will contain development plan policies and be subject to independent examination.

Supplementary Planning Documents (SPD)

These will cover many issues and will provide additional guidance for policies in the DPDs. They are not a part of the development plan and they are not subject to independent examination.

Local Development Scheme (LDS)

This document is a 3 year project plan for the production of documents in the LDF.

Annual Monitoring Report (AMR)

A document showing the progress in achieving the programme set out in the LDS and the effectiveness of development plan policies.

Strategic Environmental Assessment (SEA)

The environmental assessment of plans and policies, as required by an EU Directive.

Sustainability Appraisal (SA)

An appraisal of the environmental, social and economic impacts of specific policies and proposals. Work will be undertaken at the same time as the SEA.

Statement of Community Involvement (SCI)

This sets out the standards which the planning authority has to achieve and its proposals in relation to involving the community in plan-making. This is not a DPD but is subject to independent examination.

Appendix 4 – Acronyms

List of Acronyms used in this document:

AAP	Area Action Plan
AMR	Annual Monitoring Report
BDC	Bromsgrove District Council
BDLP	Bromsgrove District Local Plan
DPD	Development Plan Document
LA	Local Authority
LDF	Local Development Framework
LDD	Local Development Document
LDS	Local Development Plan Scheme
LPA	Local Planning Authority
PPS	Planning Policy Statement
PINS	Planning Inspectorate
RPG	Regional Planning Guidance
RSS	Regional Spatial Strategy
SA	Sustainability Appraisal
SCI	Statement of Community Involvement
SEA	Strategic Environmental Assessment
SPG	Supplementary Planning Guidance
SPD	Supplementary Planning Document
WCSP	Worcestershire County Structure Plan

Contact Details

We welcome your comments on the contents of this document. Please contact us by any of the following methods:

Telephone: 01527 881323

E-mail: planningpolicy@bromsgrove.gov.uk

Post: Planning Policy Section
Planning Services
Bromsgrove District Council
Burcot Lane
Bromsgrove
B60 1AA

For further information you can also visit the Strategic Planning Section website at;

www.bromsgrove.gov.uk/planningpolicy